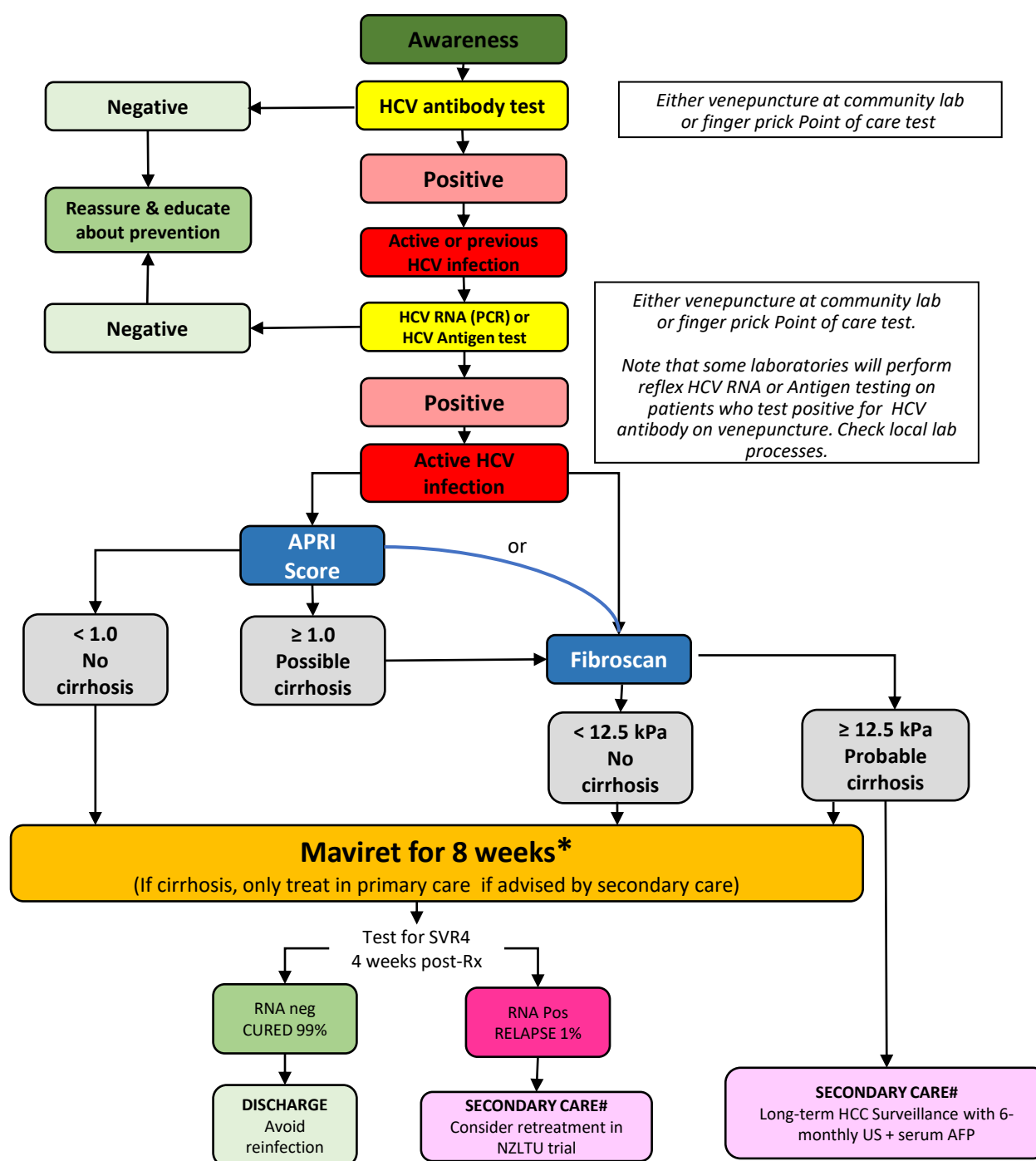


Diagnosis and management of Hepatitis C in primary care



Either venepuncture at community lab or finger prick Point of care test

Either venepuncture at community lab or finger prick Point of care test.
Note that some laboratories will perform reflex HCV RNA or Antigen testing on patients who test positive for HCV antibody on venepuncture. Check local lab processes.

Abbreviations

HCV – Hepatitis C virus
 RNA – Ribonucleic acid
 DAA – Direct-acting antiviral drugs
 SVR – Sustained virologic response
 HCC – Hepatocellular carcinoma
 GT – Genotype
 CTP – Child Turcotte Pugh score used for the classification of the severity of cirrhosis
 AFP – Alpha fetoprotein
 kPa – Kilopascals liver stiffness measurement
 APRI- AST Platelet Ratio Index (see <http://www.hepatitisc.uw.edu/page/clinical-calculators/apri>)
 NZLTU – New Zealand Liver Transplant Unit
 PCR – Polymerase chain reaction

*** If previously failed Interferon, check HCV genotype. Seek secondary care advice if unsure.**

- If GT 3 ⇒ treat with 16 weeks Maviret
- If GT not 3 ⇒ treat with 8 weeks Maviret

\$ Seek secondary care advice before treating:

- Patients with HIV co-infection
- Patients with HBV co-infection
- Patients who are breastfeeding

Refer the following to Secondary Care:

- All patients with cirrhosis
- All patients who have failed prior DAA therapy (including Maviret, Viekira Pak, Harvoni and Generics)
- Under 12 years of age